

GAT Key Tag 7xxx Key Tags

Application

The GAT Key Tags 7000, 7100, 7200 and 7300 are high-quality data carriers for the convenient identification of persons in access control systems, time recording devices, wardrobe, depot and tool lockers as well as value card, ticket and cashless payment systems and other areas of application.

The frame made of polished stainless steel makes the key tag elegant and long-lasting. Due to its high quality and precise ultrasonic welding, it can also be used in demanding and sensible environments. The free selection of RFID technology enables achieving the highest levels of technical data carrier safety.

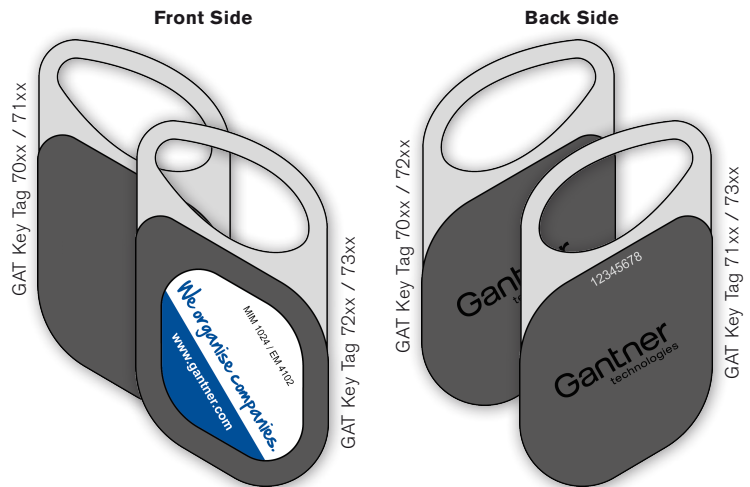
Functional Description

The RFID chips using various technologies are integrated into the key tags. The contactless reading and writing is performed via a high-frequency field, which simultaneously supplies the power for the key tags. Hence, the GAT Key Tags 7xxx do not require any batteries and simultaneously are resistant against dirt, oil, water etc.

Every GAT Key Tag 7xxx is unique thanks to the installed RFID chip. Depending on the selected RFID technology, its applications range from a simple read-only means of identification to a highly secure data carrier with encryption and safety mechanisms up to EAL 5+.

Highlights

- Massive polished stainless steel frame
- Resistant plastic housing with plane front and back sides
- Client-specific printing on the front side possible
- Numbering by laser printing in the plastic part possible
- No battery required
- Contactless HF reading and writing
- Available with various types of RFID chips
- Welded with ultrasonic welding
- Can be carried flat on a key chain
- Wide range of applications



Order Information

Description	PartNo.
GAT Key Tag 7000, <Type> Stainless steel/plastic key tag (anthracite colour), encoded	-
GAT Key Tag 7100, <Type> Stainless steel/plastic key tag (anthracite colour), with laser printing on the back side, encoded	-
GAT Key Tag 7200, <Type> Stainless steel/plastic key tag (anthracite colour), front side with GANTNER design, encoded	-
GAT Key Tag 7200, <Type> <Customer> Stainless steel/plastic key tag (anthracite colour), front side with client-specific design, encoded	-
GAT Key Tag 7300, <Type> Stainless steel/plastic key tag (anthracite colour), front side with GANTNER design, laser printing on the back side, encoded	-
GAT Key Tag 7300, <Type> <Customer> Stainless steel/plastic key tag (anthracite colour), front side with client-specific design, laser printing on the back side, encoded	-

<Type> Definition of chip type (see Technical Data, page 2)

<Customer> ... Information (unique identification) of client-specific design

Technical Data

Power supply:	Without battery, contactless via read/write RF field	Read/write ranges:	Up to 50 mm
Data memory:	256 to 4096 byte EEPROM (depending on chip type)	Write cycles:	100,000 (depending on chip type)
RFID types:	LEGIC®, MIFARE™, ISO 15693, Proxy	Housing material:	Combinations of PVC and polished stainless steel
RF frequencies:	13.56 MHz, 125 kHz	Colour:	anthracite
Chip types (single):	<Type>	Dimensions:	59.5 x 31.4 x 5.4 mm (2.34 x 1.24 x 0.21 inch)
- MIM1024	LEGIC prime MIM1024	Permitted ambient temperature:	-20°C to +70°C
- MIM1024ST	LEGIC prime MIM1024 SUPERTAG		
- ATC128	LEGIC advant ATC128-MV210		
- ATC1024	LEGIC advant ATC1024-MV110		
- ATC2048	LEGIC advant ATC2048-MP110		
- ATC4096	LEGIC advant ATC4096-MP311		
- CTC4096	LEGIC advant/prime CTC4096-MP410		
- S50	MIFARE Classic 1k S50		
- S70	MIFARE Classic 4k S70		
- D41	MIFARE DESFire 4k ev1		
- D81	MIFARE DESFire 8k ev1		
- D4SP	MIFARE DESFire 4k ev1 SPEED		
- D8SP	MIFARE DESFire 8k ev1 SPEED		
- EM4102	PROXY EM 4102		
Chip types (combinations):	<Type>		
- MIM256/EM4102	LEGIC prime MIM256 + PROXY EM4102		
- MIM256/S50	LEGIC prime MIM256 + MIFARE Classic 1k S50		
- MIM256/D41	LEGIC prime MIM256 + MIFARE DESFire 4k ev1		
- MIM1024/EM4102	LEGIC prime MIM1024 + PROXY EM4102		
- MIM1024/S50	LEGIC prime MIM1024 + MIFARE Classic 1k S50		
- MIM1024/D41	LEGIC prime MIM1024 + MIFARE DESFire 4k ev1		
- S50/EM4102	MIFARE Classic 1k S50 + PROXY EM4102		

Dimensions

