

## GAT DL 34x

### Electronic Door Handle

#### FACTS AT A GLANCE

- Multi-technology reader for all popular RFID technologies
- Fast installation without drilling
- No cabling required
- Complies with current European lock standards
- Suitable for fire doors and emergency exits
- Existing locks and locking cylinders can still be used
- Long battery life with effortless battery replacement
- Outdoor version available
- Door fitting suitable for use with all common doors



The GAT DL 34x is a simple, timeless and elegant electronic door handle in modern stainless steel, which delights in its technical abilities.

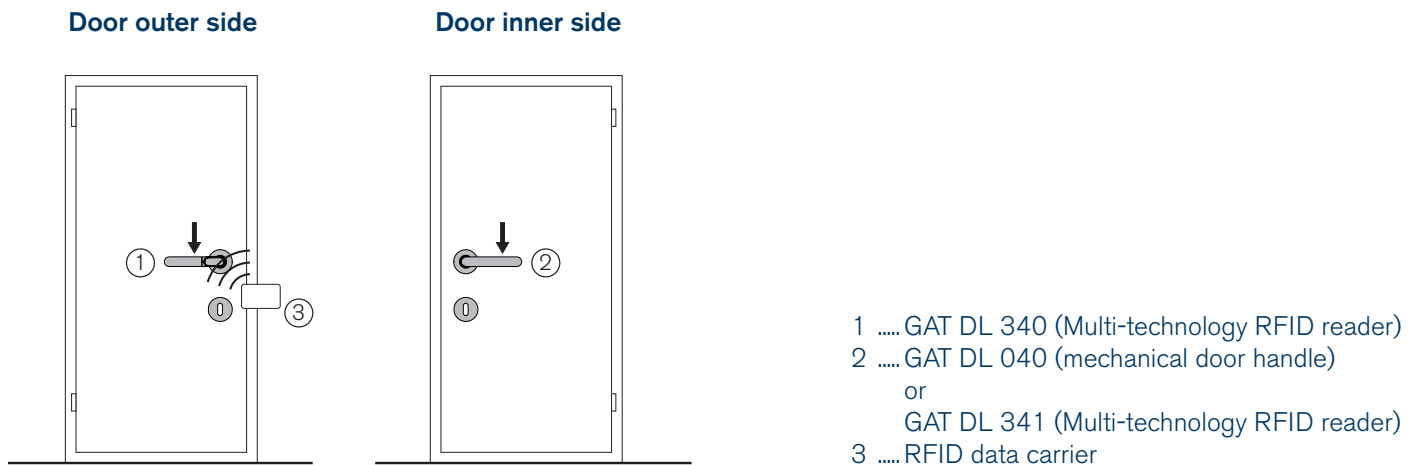
The door handle complies with numerous European lock standards and the availability of different variants allows its convenient use in all popular doors with a backset of more than 30 mm without issues. This feature makes the GAT DL 34x ideal for new building projects as well as for existing buildings as retrofitting is simple and the lock can also operate in combination with other systems.

The reading unit and communication electronics as well as the mechanics and power supply are packaged neatly and hidden from view inside the slim body of the door handle.

To function as a "key", all current RFID data carriers, such as employee IDs or key tags, can be used.



## Typical Application



## Technical Data

Power supply:	1 x 3 V battery, CR123A (Battery 3V Ultra Lithium 123 CR17345, Part No. 798840) <b>ATTENTION!</b> Observe the battery specifications of the manufacturer: - Panasonic CR-123APA/BE (made in Indonesia) - Panasonic CR-123APA/B (made in Indonesia)
Battery lifespan:	Approx. 35,000 operations
Max. transmitting power:	200 mW
Data storage:	Time schedules, daily schedules, and special days for max. 60 months
Reader type:	Multi-technology RFID reader (LEGIC advant)
Reading field frequency:	13.56 MHz
Supported data carriers:	LEGIC prime, LEGIC advant, MIFARE® DESFire, ISO 15693, and HID iClass
Communication frequency:	868 MHz
Dimensions:	Compatible with all current European lock standards - Backset > 30 mm - Door thickness from 30 to 110 mm - Spindle sizes: 7, 8, 8.5, 9, and 10 mm
Signaling elements:	- LED (red/green/blue) - Beeper
Storage temperature:	-40 to +65 °C
Operating temperature	
- Indoor version:	+5 to +55 °C
- Outdoor version:	-25 to +65 °C
Humidity:	max. 95% rH (not condensed)
Protection type	
- Indoor version:	IP40
- Outdoor version:	IP66
Compliance:	CE
Test certificate for fire protection doors (GAT DL 342):	P-15-003300-PR02-ift (AbP-G03-03-de-01)
Standards:	EN 300 220 V2.4.1   EN 301 489-1 V1.9.2 EN 302 291 V1.1.1   EN 55022:2010 EN 61000-6-1:2007 + EN 61000-6-3:2007 EN 60950-1:2006 + A11:2009 + A1:2010 + A12:2011 + AC:2011 + A2:2013 EN 62479:2010 RL 1999/5/EG, RegTP Vfg. Nr. 30/2006

## Order Information

The following three parts must be ordered separately:

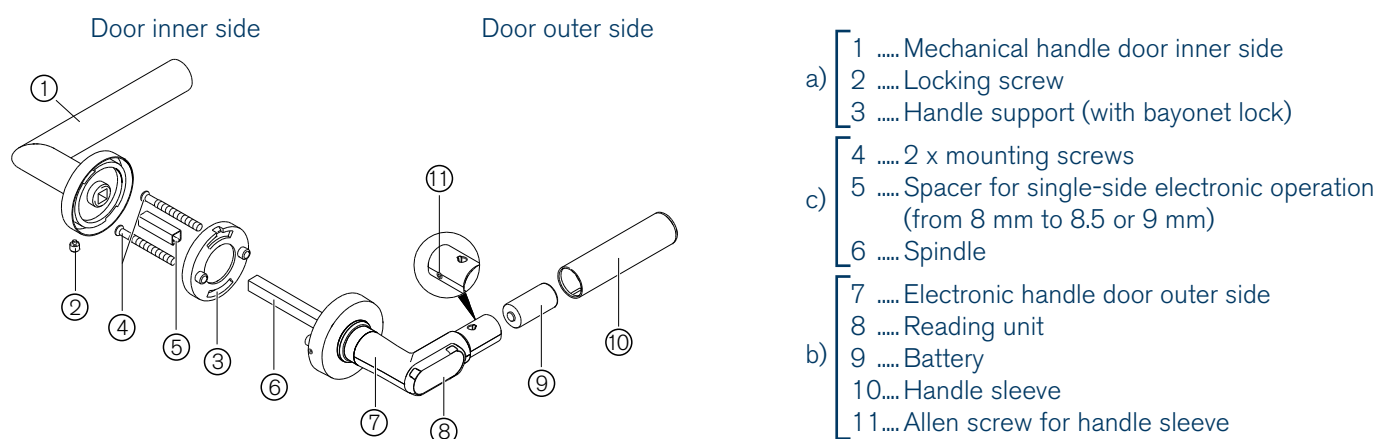
- a) Door handle for the door inner side.
- b) Door handle for the door outer side
- c) Spindle (the applicable length and thickness must always be used. Only use compensating spacers if absolutely necessary)

The door handles consist of various parts, which differ depending on whether the application requires:

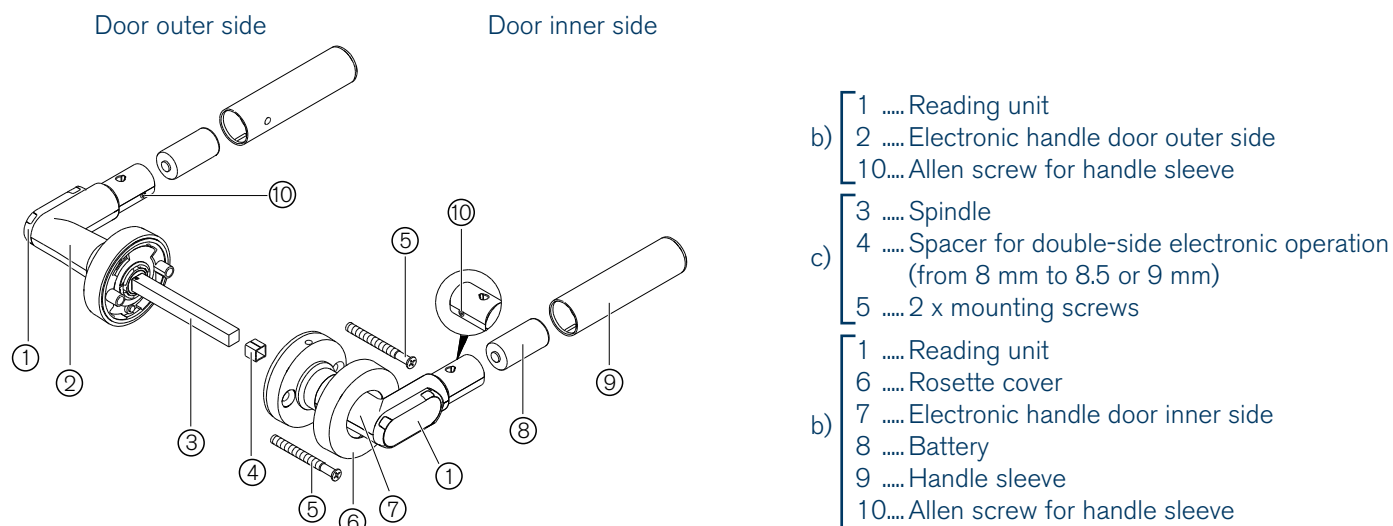
- one-sided or two-sided electronic door handle,
- electronic door handle for fire protection and/or emergency exit doors (only possible on the door outer side),
- electronic door handle for outdoor use.
- 

**NOTE!** The use of the different variants (round rosette, oval rosette, etc.) must always be matched with the door and lock technology. Not every variant can be used with every door.

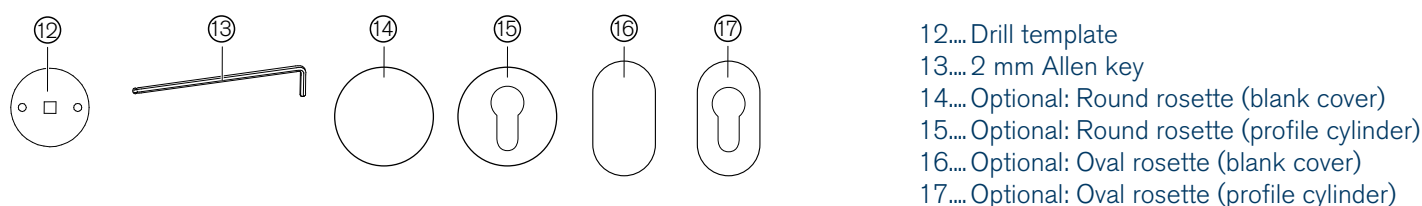
### Electronic outer handle (GAT DL 340/342/345) and mechanical inner handle (GAT DL 040/042)



### Electronic outer handle (GAT DL 340/345) and electronic inner handle (GAT DL 341/346)



### Installation aids and key rosettes

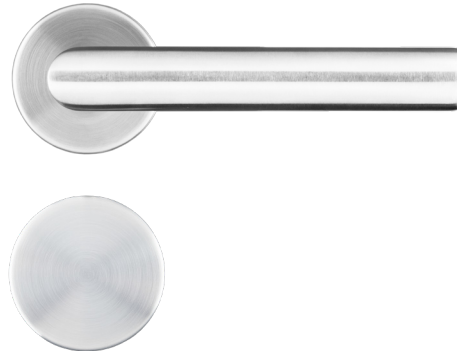


## Variant - Round Rosette

## Electronic Handle



## Mechanical Handle



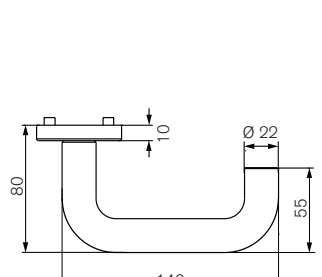
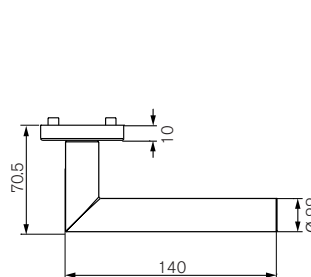
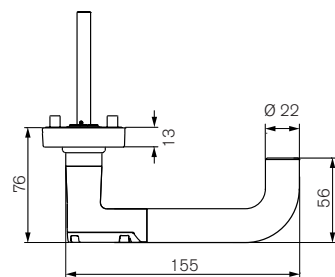
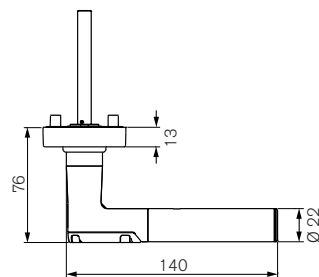
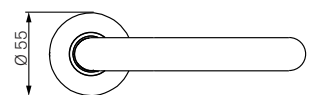
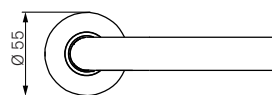
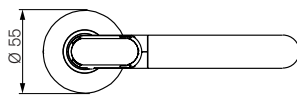
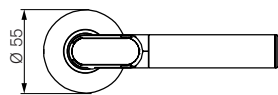
**NOTE:** Graphical representation of profile cylinder, also available as round cylinder or blind rosette.

L1: L-shape handle

U2: U-shape handle

L1: L-shape handle

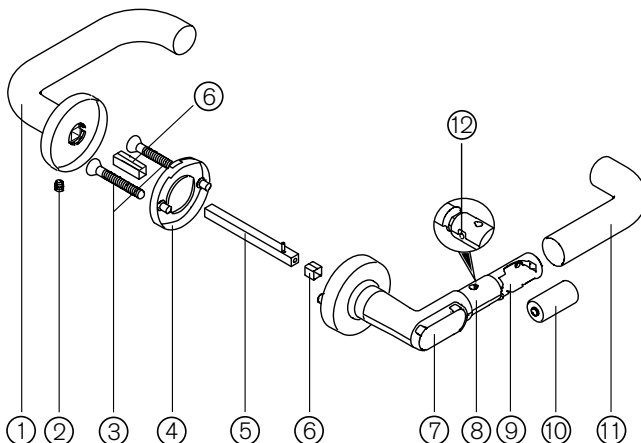
U2: U-shape handle



## Electronic outer handle (GAT DL 340/342/345) and mechanical inner handle (GAT DL 040/042)

Door inner side

Door outer side



- 1 ..... Mechanical door handle
- 2 ..... Locking screw
- 3 ..... Mounting screws
- 4 ..... Handle support (with bayonet lock)
- 5 ..... Spindle with spiral tension pin
- 6 ..... Spindle spacer (only with 7mm spindle)
- 7 ..... Reading unit
- 8 ..... Electronic door handle
- 9 ..... Battery compartment
- 10 ..... Battery
- 11 ..... Handle sleeve
- 12 ..... Allen screw for handle sleeve

## Variant - Oval Rosette

## Electronic Handle

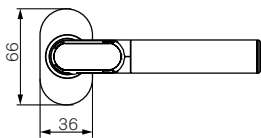


## Mechanical Handle

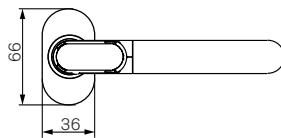


**NOTE:** Graphical representation of profile cylinder, also available as round cylinder or blind rosette.

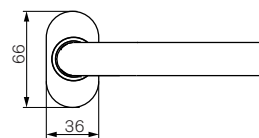
L1: L-shape handle



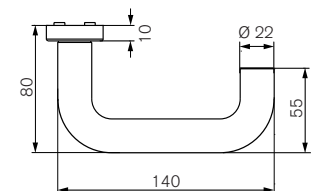
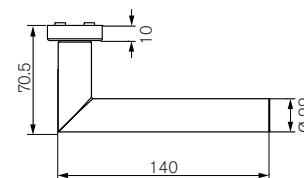
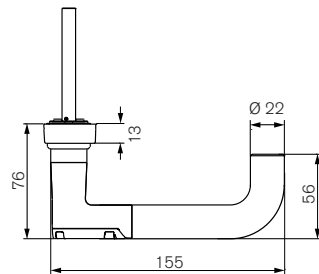
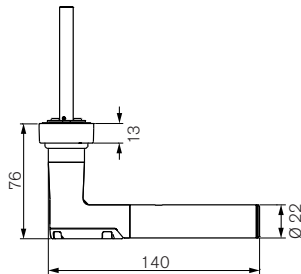
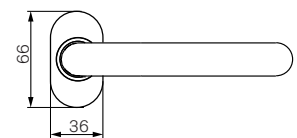
U2: U-shape handle



L1: L-shape handle



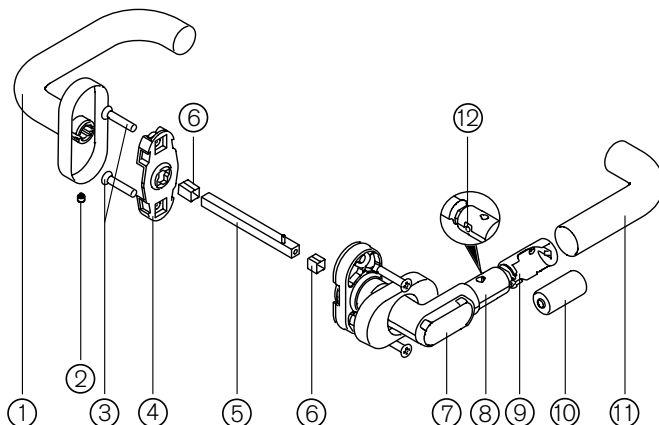
U2: U-shape handle



## Electronic outer handle (GAT DL 340/342/345) and mechanical inner handle (GAT DL 040/042)

Door inner side

Door outer side



- 1 ..... Mechanical door handle
- 2 ..... Locking screw
- 3 ..... Mounting screws
- 4 ..... Handle support (with bayonet lock)
- 5 ..... Spindle with spiral tension pin
- 6 ..... Spindle spacer (only with 7mm spindle)
- 7 ..... Reading unit
- 8 ..... Electronic door handle
- 9 ..... Battery compartment
- 10 ..... Battery
- 11 ..... Handle sleeve
- 12 ..... Allen screw for handle sleeve

## Variant - Narrow Long Plate

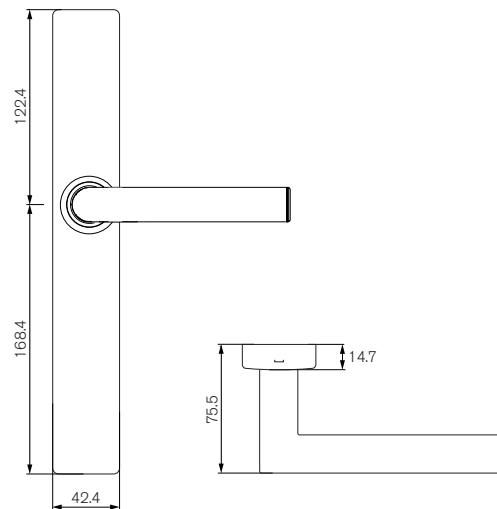
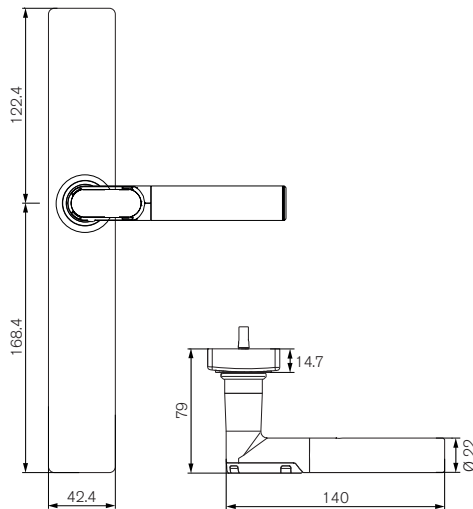
## Electronic Handle



## Mechanical Handle



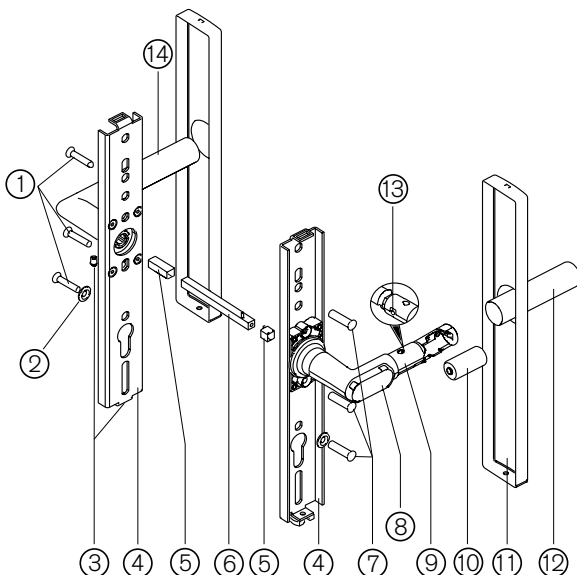
**NOTE:** Graphical representation of profile cylinder, also available as round cylinder or blind rosette.



## Electronic outer handle (GAT DL 340/342/345) and mechanical inner handle (GAT DL 040/042)

Door inner side

Door outer side



- 1 ..... Mounting screws
- 2 ..... Washers
- 3 ..... Locking screws
- 4 ..... Base plate
- 5 ..... Spindle spacer (only with 7mm spindle)
- 6 ..... Spindle with spiral tension pin
- 7 ..... Threaded sleeves
- 8 ..... Reading unit
- 9 ..... Electronic door handle
- 10..... Battery
- 11.... Cover plate
- 12.... Handle sleeve
- 13.... Allen screw for handle sleeve
- 14.... Mechanical door handle

## Variant - Wide Long Plate

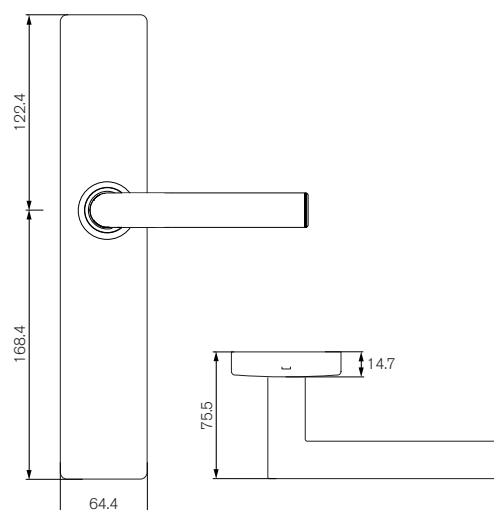
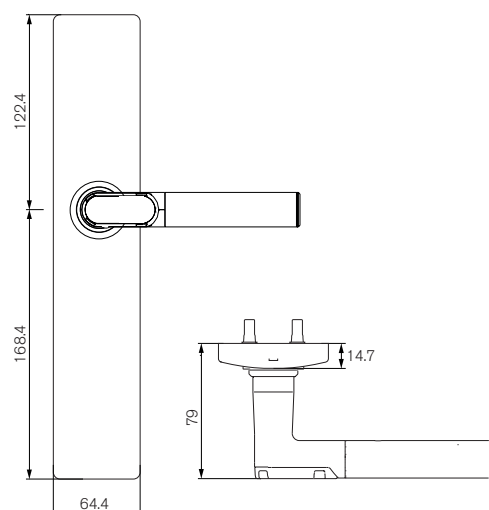
## Electronic Handle



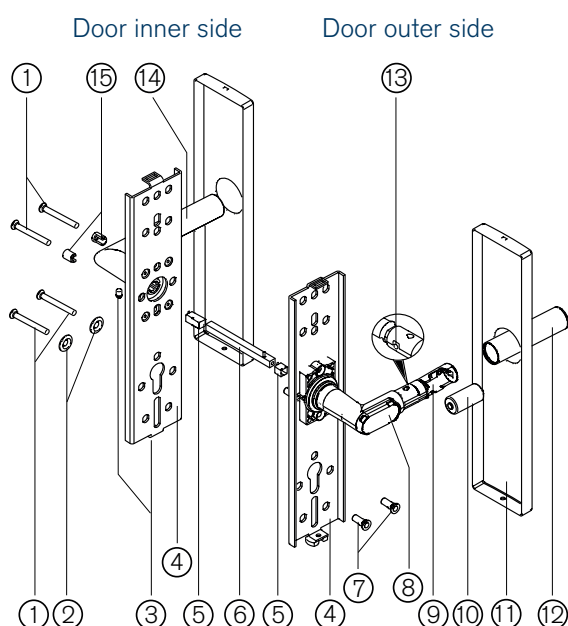
## Mechanical Handle



**NOTE:** Graphical representation of profile cylinder, also available as round cylinder or blind rosette.



## Electronic outer handle (GAT DL 340/342/345) and mechanical inner handle (GAT DL 040/042)



- 1 ..... Mounting screws
- 2 ..... Washers
- 3 ..... Locking screws
- 4 ..... Base plate
- 5 ..... Spindle spacer (only with 7mm spindle)
- 6 ..... Spindle with spiral tension pin
- 7 ..... Threaded sleeves
- 8 ..... Reading unit
- 9 ..... Electronic door handle
- 10..... Battery
- 11.... Cover plate
- 12.... Handle sleeve
- 13.... Allen screw for handle sleeve
- 14.... Mechanical door handle
- 15.... Screw sleeves

## Variant - Short Plate

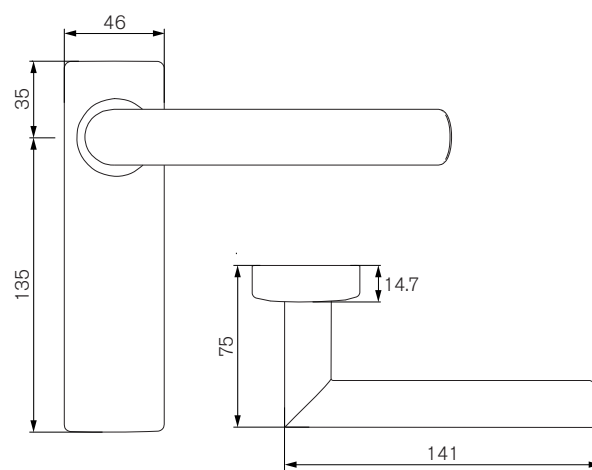
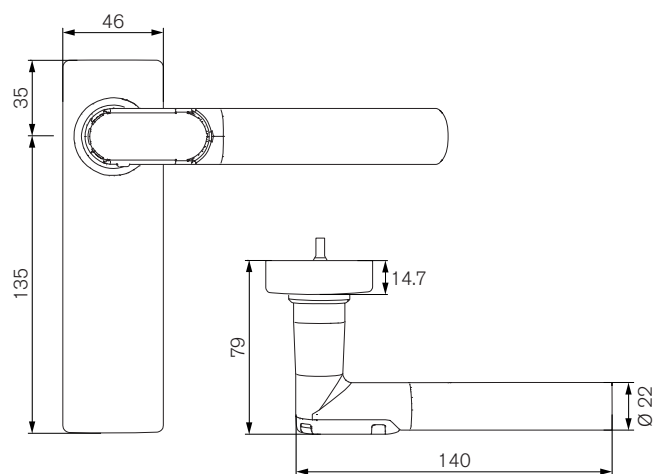
## Electronic Handle



## Mechanical Handle



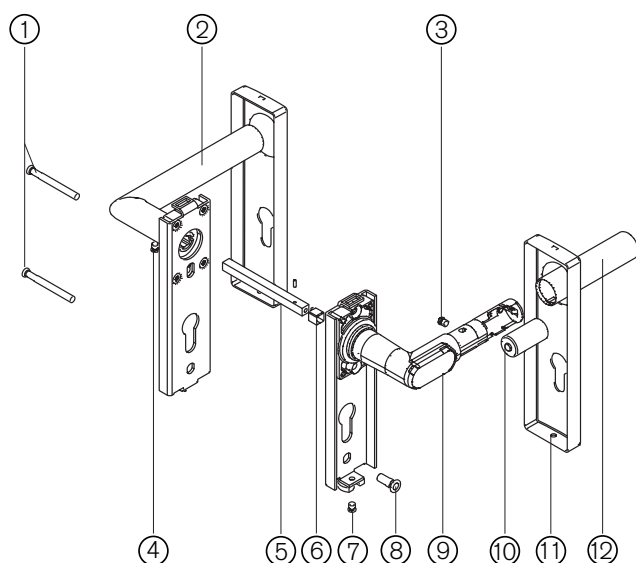
**NOTE:** Profile cylinder shown. Round cylinder also available.



## Electronic outer handle (GAT DL 340/342/345) and mechanical inner handle (GAT DL 040/042)

Door inner side

Door outer side



- 1 ..... Mounting screws
- 2 ..... Mechanical door handle
- 3 ..... Allen screw for handle sleeve
- 4 ..... Locking screw
- 5 ..... Spindle with spiral tension pin
- 6 ..... Spindle spacer (only with 7mm spindle)
- 7 ..... Locking screw
- 8 ..... Threaded sleeve
- 9 ..... Electronic door handle
- 10..... Battery
- 11.... Cover plate
- 12.... Handle sleeve